



Hydraulic Breakers



DEHACO



BREAKING BUILDINGS



BREAKING OF MASONRY



SECONDARY BREAKING



DEMOLITION OF BUILDINGS



ASPHALT AND PAVING



CONCRETE CONSTRUCTIONS



REINFORCED CONCRETE



UNDERWATER BREAKING





Dehaco IBEX breakers

Breaking rocks, trenching, breaking concrete structures and buildings, asphalt and paving breaking, removing slag from blast furnaces and ladles, secondary rock breaking...

When controlled force is necessary the IBEX hydraulic breakers from Dehaco are in a class of their own. Outstanding quality, extremely versatile, an amass of power and durability.

Dehaco's years of experience has led to the development of hydraulic breakers that are extremely reliable and simple to maintain. The high quality – Dutch design – guarantees excellence. All models are protected by a specially designed housing, making them suitable for the broadest variety of applications.

Consequently inspection points have been introduced in the housing, allowing regular checks to be made on the through bolts. The housing can withstand the toughest conditions and has a modern appearance. An optional automatic lubrication system makes it even simpler to keep the breaker in perfect condition. In combination with a special set the breakers can also be operated underwater.

IBEX GS-series (Gas Silenced)

The IBEX GS-series is comprised of 14 models, all equipped with a nitrogen accumulator and suitable for carriers from 0.8 to 55 tons.

The larger models in the GS-series (1200 – 4000) feature an accumulator to generate additional impact energy. The accumulator also reduces peak pressures from the hydraulic circuit, reducing recoil to the carrier and protecting the breaker. When desired the breakers are available with an open housing, the GO-series (Gas Open).

IBEX HS-series (Hydraulic Silenced)

The IBEX HS-series is comprised of 4 models, these completely hydraulic breakers feature the PAA-system (Power Absorbing Accumulator) and the OTC-system (Oil Traffic Control). These specially designed technologies ensure a continuous and stable oil flow and operating pressure, where an optimal impact energy will be produced. Both systems act as a hydraulic shock absorber, where the constant impact energy further reduces any recoil to the carrier.

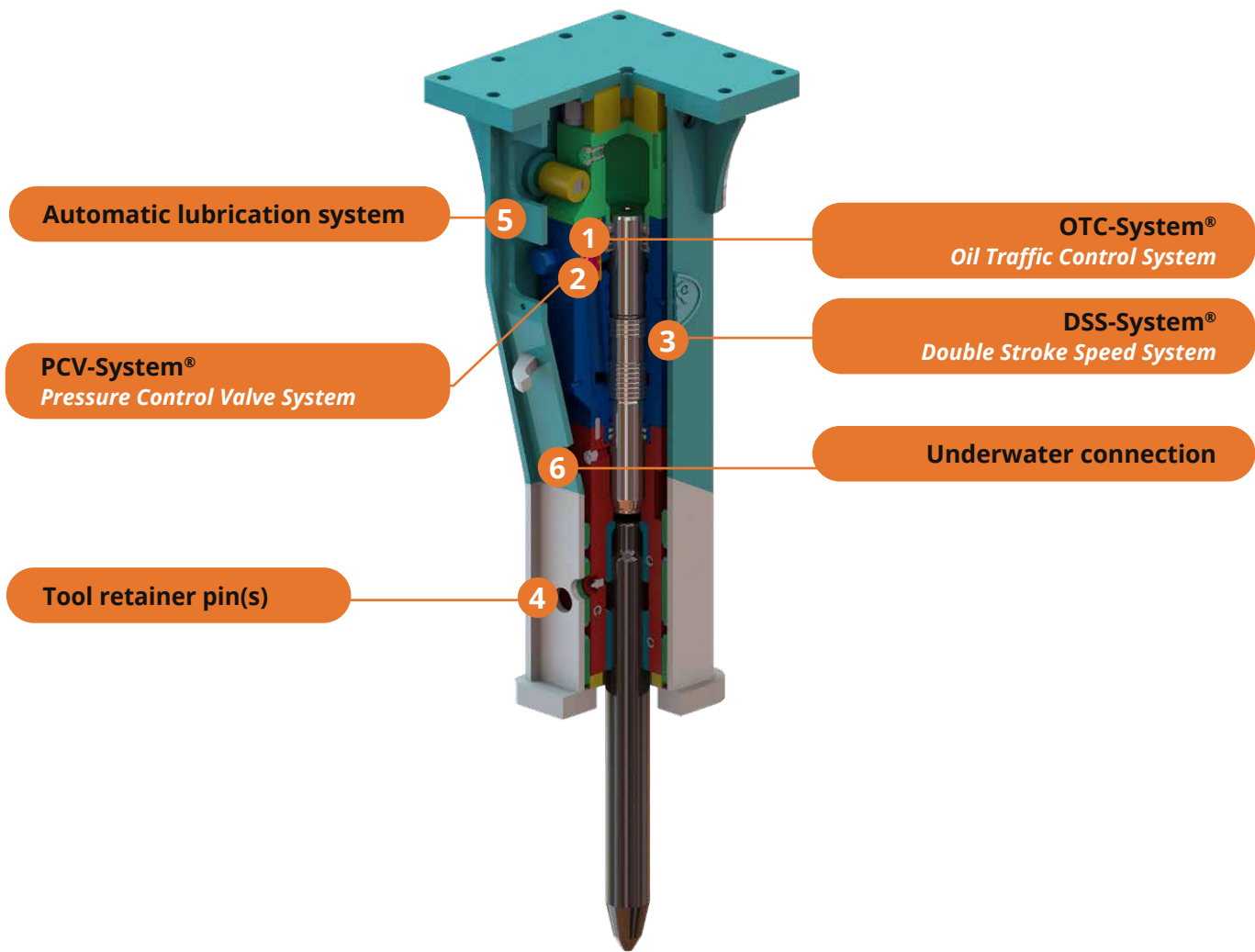
All HS-models feature as standard ABF-technology. This is an automatic control system which comes into effect when blank strokes are detected during operation. This prevents enormous amounts of stress being applied to the vital components which increases the lifespan and reduces the wear to the breaker. The longer maintenance intervals characterise these as extremely reliable breakers.



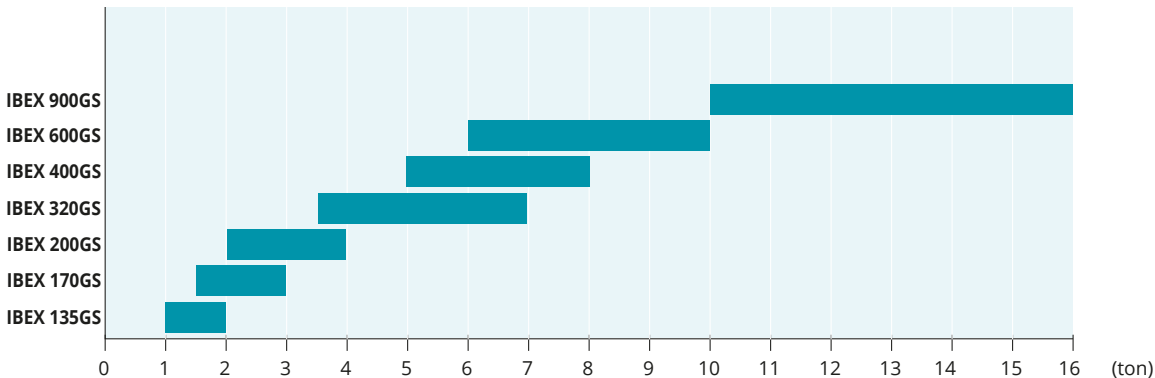


Features

135GS - 900GS



Weightclass



1 OTC-System®

Oil Traffic Control System

The OTC-System® regulates the oil flow, ensuring that the oil is directed in the required direction within the hydraulics circuit of the breaker. Ensuring an extremely stable functioning of the breaker.

2 PCV-System®

Pressure Control Valve System

The PCV-System® adjusts the maximum operating pressure of the hydraulic circuit. To guarantee optimal efficiency this should only be adjusted by a specialist.
(From IBEX 900GS)

3 DSS-System®

Double Stroke Speed System

The impact rate of the breaker can be adjusted with the DSS-System®. The operator has the choice of a long or short stroke for optimum performance.
(From IBEX 900GS)

4 Tool retainer pins

The smaller IBEX models feature a single tool retainer pin. From the IBEX 600GS all breakers feature dual tool retainer pins. Dual tool retainer pins guarantee an optimal guiding of the tool and ensures uniform wear of the tool and tool bushes. The dual tool retainer pins are held in position using a robust cover plate.

5 Automatic lubrication system

When combined with an automatic lubrication system manual lubrication of the breaker is no longer required. The breaker will automatically receive optimal lubrication.
(Option from IBEX 320GS)

6 Underwater connection

From model 170GS are the GS-series breakers feature a connection allowing underwater operations. When operating underwater it is of the utmost importance that the correct equipment is used to supply the required air. We advise the use of the IBOX-Alarmsystem® when operating underwater.
(From IBEX 170GS)

IBOX Alarmsystem®

The IBOX Alarmsystem® is suitable for all IBEX breakers that can be operated underwater. If the air or power supply is insufficient the unit works directly. The operator receives a visual and audible warning in the cabin. Where damage to the breaker and carrier can be prevented.





Hydraulic Breakers GS-serie

135GS - 900GS

		IBEX 135GS	IBEX 170GS	IBEX 200GS	
Technical specifications	Carrier weight class ⁽¹⁾	t	1 - 2	1,5 - 3	2 - 4
	Operational weight ⁽²⁾	kg	125	170	200
	Standard weight ⁽³⁾	kg	115	150	182
	Tool diameter	mm	40	53	59,5
	Oil flow	l/min	35	25 - 40	30 - 45
	Operating pressure	bar	90 - 120	90 - 120	90 - 120
	Impact rate	BPM	700 - 1500	600 - 950	550 - 800
	Max. hydraulic input power	kW	7	8	9
	Features	Accumulator	-	-	-
DSS-System®		-	-	-	
OTC-System®		●	●	●	
ABF-Technology		-	-	-	
PCV-System®		-	-	-	
DPB-System®		-	-	-	
Connection for underwater kit		-	●	●	
Automatic lubrication system		-	-	-	
Article number		1010.0060	1010.0032	1010.0034	

(1) Weights are only applicable to standard carriers.

All deviations must be agreed upon prior to the installation by Dehaco and/or the manufacturer of the carrier.

(2) Breaker weight including amoil point, standard top bracket and hose set. (approximation)

(3) Breaker weight including amoil point and flat top plate. (approximation)



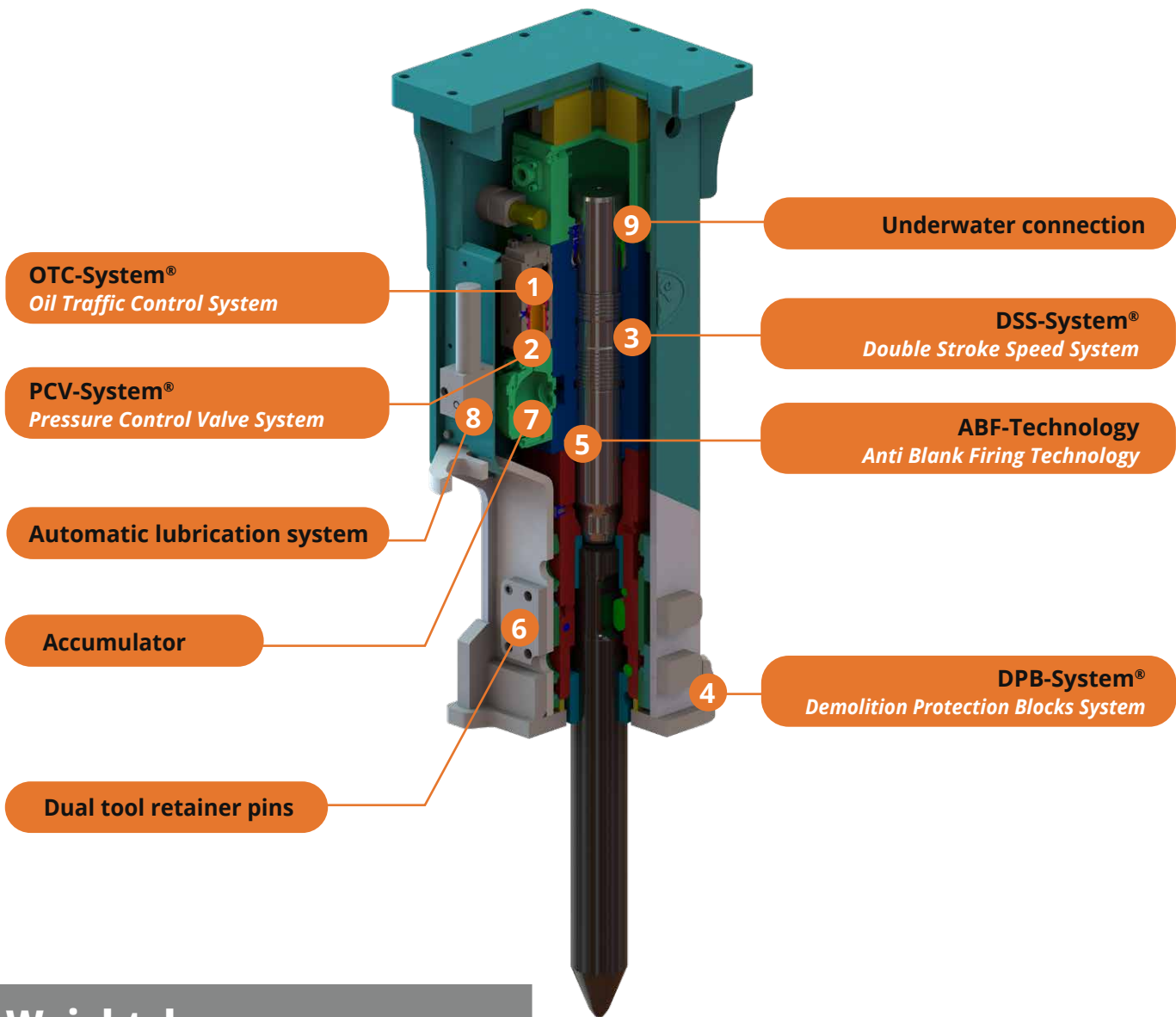
IBEX 320GS	IBEX 400GS	IBEX 600GS	IBEX 900GS
3,5 - 7	5 - 8	6 - 10	10 - 16
320	420	610	980
300	395	570	850
68	74,5	85	98
35 - 50	45 - 85	45 - 90	80 - 100
95 - 130	95 - 130	130 - 150	140 - 160
500 - 750	460 - 750	400 - 800	450 - 650
11	18	23	27
-	-	-	-
-	-	-	●
●	●	●	●
-	-	-	●
-	-	-	●
-	-	-	-
●	●	●	●
-	-	○	○
1010.0038	1010.0040	1010.0041	1010.0043

- Standard
- Option
- Not available

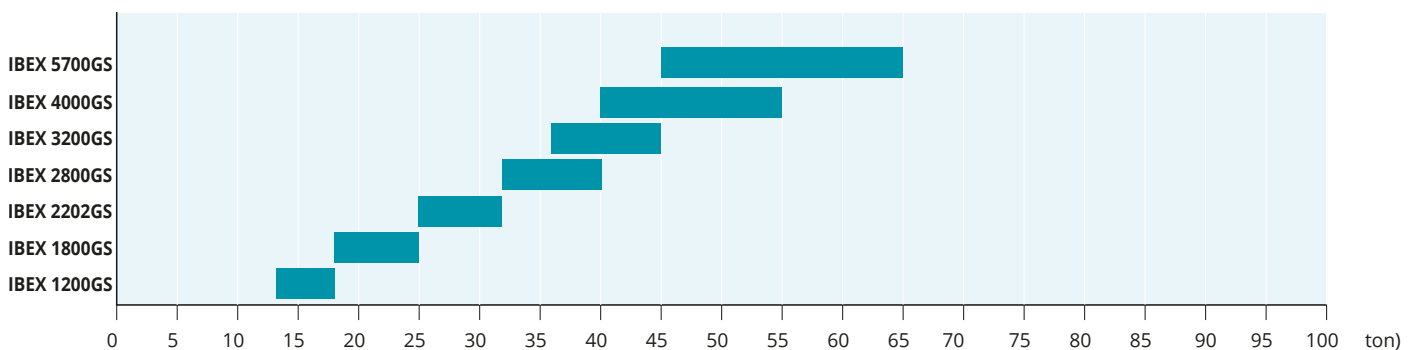


Features

1200GS - 4000GS



Weightclass



1 OTC-System®

Oil Traffic Control System

The OTC-System® regulates the oil flow, ensuring that the oil is directed in the required direction within the hydraulics circuit of the breaker. Ensuring an extremely stable functioning of the breaker.

2 PCV-System®

Pressure Control Valve System

The PCV-System® adjusts the maximum operating pressure of the hydraulic circuit. To guarantee optimal efficiency this should only be adjusted by a specialist.
(From IBEX 900GS)

3 DSS-System®

Double Stroke Speed System

The impact rate of the breaker can be adjusted with the DSS-System®. The operator has the choice of a long or short stroke for optimum performance.
(From IBEX 900GS)

4 DPB-System®

Demolition Protection Blocks System

All models from the 1200GS feature the DPB-System®. During extreme applications the DPB-System® protects the housing of the breaker. The 'blocks' are manufactured from premium, abrasion resistant Hardox®.

5 ABF-Technology

Anti Blank Firing Technology

ABF-technology is an automatic control system which comes into effect when blank strokes are detected during operation. This prevents enormous amounts of stress being applied to the vital components which increases the lifespan and reduces the wear to the breaker. The recoil applied to the carrier is also vastly reduced.
(Models 1800GS and 2202GS)

6 Dual tool retainer pins

Dual tool retainer pins guarantee an optimal guiding of the tool and ensures uniform wear of the tool and tool bushes. The dual tool retainer pins are held in position using a robust cover plate.

7 Accumulator

The accumulator also reduces peak pressures from the hydraulic circuit, reducing recoil to the carrier and protecting the breaker.

8 Automatic lubrication system

When combined with an automatic lubrication system manual lubrication of the breaker is no longer required. The breaker will automatically receive optimal lubrication.
(Optional)

9 Underwater connection

The GS-series breakers feature an air connection allowing underwater operations. When operating underwater it is of the utmost importance that the correct equipment is used to supply the required air. We advise the use of the IBOX-Alarmsystem® when operating underwater.
(From IBEX 170GS)

IBOX Alarmsystem®

The IBOX Alarmsystem® is suitable for all IBEX breakers that can be operated underwater. If the air or power supply is insufficient the unit works directly. The operator receives a visual and audible warning in the cabin. Where damage to the breaker and carrier can be prevented.





Hydraulic Breakers GS-serie

1200GS - 5700GS

		IBEX 1200GS	IBEX 1800GS	IBEX 2202GS	
Technical specifications	Carrier weight class ⁽¹⁾	t	13 - 18	18 - 25	25 - 32
	Operational weight ⁽²⁾	kg	1255	1800	2215
	Standard weight ⁽³⁾	kg	1140	1625	2050
	Tool diameter	mm	120	135	150
	Oil flow	l/min	90 - 120	125 - 150	160 - 190
	Operating pressure	bar	150 - 170	160 - 180	160 - 180
	Impact rate	BPM	450 - 800	400 - 800	350 - 700
	Max. hydraulic input power	kW	34	45	57
	Features	Accumulator	●	●	●
DSS-System®		●	●	●	
OTC-System®		●	●	●	
ABF-Technology		●	●	●	
PCV-System®		●	●	●	
DPB-System®		●	●	●	
Connection for underwater kit		●	●	●	
Automatic lubrication system		○	○	○	
Article number		1010.0030	1010.0033	1010.0052	

(1) Weights are only applicable to standard carriers.

All deviations must be agreed upon prior to the installation by Dehaco and/or the manufacturer of the carrier.

(2) Breaker weight including amoil point, standard top bracket and hose set. (approximation)

(3) Breaker weight including amoil point and flat top plate. (approximation)



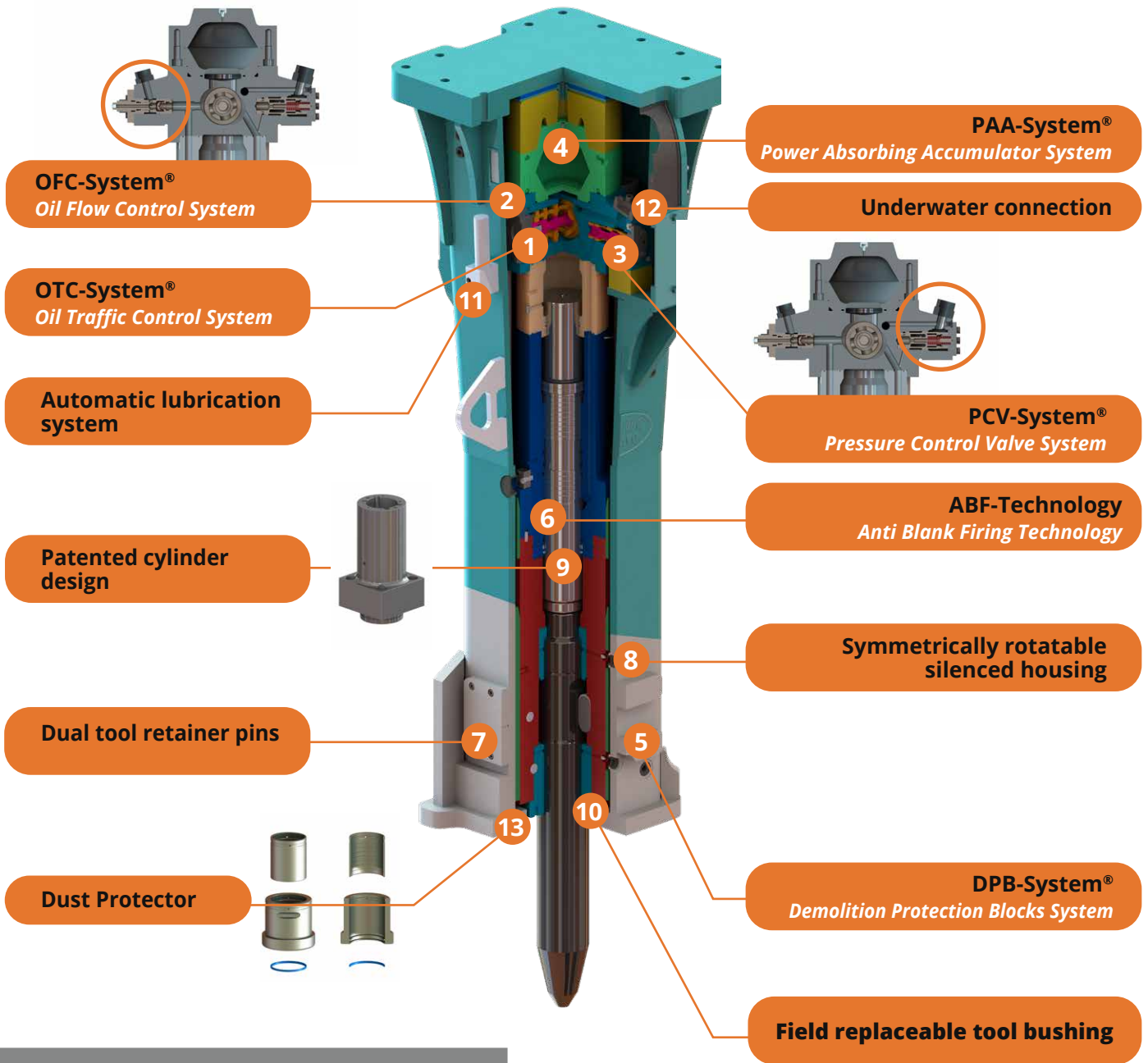
IBEX 2800GS	IBEX 3200GS	IBEX 4000GS	IBEX 5700GS
32 - 40	36 - 45	40 - 55	45 - 65
2950	3300	4300	5300
2640	2900	3710	4800
153	160	180	195
180 - 220	190 - 260	250 - 300	260 - 360
160 - 180	160 - 180	160 - 180	160 - 180
250 - 550	200 - 450	200 - 400	200 - 350
66	78	90	108
●	●	●	●
●	●	●	●
●	●	●	●
●	-	●	●
●	●	●	●
●	●	●	●
●	●	●	●
○	○	○	○
1010.0036	1010.0037	1010.0039	1010.0073

- Standard
- Option
- Not available

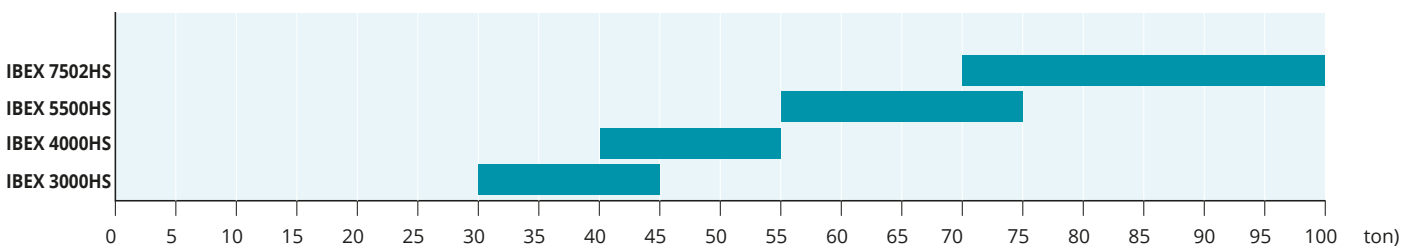


Features

3000HS - 7502HS



Weightclass



- 1 OTC-System®**
Oil Traffic Control System
 The OTC-System® regulates the oil flow, ensuring that the oil is directed in the required direction within the hydraulics circuit of the breaker. Ensuring an extremely stable functioning of the breaker.
- 2 OFC-System®**
Oil Flow Control System
 The OFC-System® prevents oil flowing in the incorrect direction and protects the breaker from peaks and variations in the oil flow. Therefore the chance of overloading within the hydraulic circuit is reduced to a minimum.
- 3 PCV-System®**
Pressure Control Valve System
 The PCV-System® adjusts the maximum operating pressure of the hydraulic circuit. To guarantee optimal efficiency this should only be adjusted by a specialist.
- 4 PAA-System®**
Power Absorbing Accumulator System
 This specially designed accumulator ensures that the maximum impact energy is generated whilst reducing peak pressures in the hydraulic circuit from the carrier.
- 5 DPB-System®**
Demolition Protection Blocks System
 All of the HS-series feature the DPB-System®. During extreme applications the DPB-System® protects the housing of the breaker. The 'blocks' are manufactured from premium, abrasion resistant Hardox®.
- 6 ABF-Technology**
Anti Blank Firing Technology
 ABF-technology is an automatic control system which comes into effect when blank strokes are detected during operation. This prevents enormous amounts of stress being applied to the vital components which increases the lifespan and reduces the wear to the breaker. The recoil applied to the carrier is also vastly reduced.
- 7 Dual tool retainer pins**
 Dual tool retainer pins guarantee an optimal guiding of the tool and ensures uniform wear of the tool and tool bushes. The dual tool retainer pins are held in position using a robust cover plate.
- 8 Symmetrically rotatable silenced housing**
 The housing design allows the body of the breaker to be rotated 180°. Compensating the wearing of the housing and increasing its lifespan.
- 9 Patented cylinder design**
 This specially designed cylinder, where the lower section is square and the upper section cylindrical ensure the stability of the construction. The design reduces the chance of unnecessary damage to the vital components.
- 10 Field replaceable tool bushing**
 The tool bush of the HS-series can be simply replaced in the field.
- 11 Automatic lubrication system**
 When combined with an automatic lubrication system manual lubrication of the breaker is no longer required. The breaker will automatically receive optimal lubrication.
(Optional)
- 12 Underwater connection**
 All of the HS-series breakers feature an air connection allowing underwater operations. When operating underwater it is of the utmost importance that the correct equipment is used to supply the required air. We advise the use of the IBOX-Alarmssystem® when operating underwater.
- 13 Dust protector**
 When the breaker is used for mining applications we advise the use of the dust protector. This option is comprised of a dust wiper seal, special tool bush with replaceable inner sleeve. The dust protector protects the components against dirt and dust, where the lifespan of the breaker will be increased. *(Optional)*



Hydraulic Breakers HS-serie

3000HS - 7502HS

		IBEX 3000HS	IBEX 4000HS	IBEX 5500HS	
Technical specifications	Carrier weight class ⁽¹⁾	t	30 - 45	40 - 55	50 - 75
	Operational weight ⁽²⁾	kg	3250	4430	5500
	Standard weight ⁽³⁾	kg	2950	3900	5000
	Tool diameter	mm	165	175	180
	Oil flow	l/min	190 - 220	210 - 240	250 - 305
	Operating pressure	bar	130 - 150	130 - 150	130 - 150
	Impact rate	BPM	300 - 450	300 - 400	300 - 400
	Max. hydraulic input power	kW	55	60	76
	Features	PAA-System®	●	●	●
OFC-System®		●	●	●	
OTC-System®		●	●	●	
ABF-Technology		●	●	●	
PCV-System®		●	●	●	
DPB-System®		●	●	●	
Connection for underwater kit		●	●	●	
Dust Protector		○	○	○	
Automatic lubrication system		○	○	○	
Article number		1010.0046	1010.0047	1010.0048	

(1) Weights are only applicable to standard carriers.

All deviations must be agreed upon prior to the installation by Dehaco and/or the manufacturer of the carrier.

(2) Breaker weight including amoil point, standard top bracket and hose set. (approximation)

(3) Breaker weight including amoil point and flat top plate. (approximation)



IBOX Alarmsystem®

The IBOX Alarmsystem® is suitable for all IBEX breakers that can be operated underwater. If the air or power supply is insufficient the unit works directly. The operator receives a visual and audible warning in the cabin. Where damage to the breaker and carrier can be prevented.



IBEX 7502HS	
70 - 100	
8380	
7350	
205	
300 - 400	
140 - 160	
300 - 400	
107	
●	
●	
●	
●	
●	
●	
●	
○	
○	
1010.0049	

- Standard
- Option
- Not available



Working tools



Moil point - pyramidal



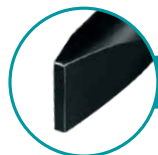
Wide chisel



Moil point - conical



Asphalt tool



Chisel



Blunt tool

Model	Type	Diameter	Width	Total length	Article number
IBEX 135GS	Moil point - pyramidal	40	-	500	1015.0284
	Moil point - conical	40	-	500	1015.0286
	Chisel	40	-	500	1015.0287
	Wide chisel	40	117	430	1015.0291
	Asphalt tool	40	117	430	1015.0290
	Blunt tool	40	-	500	1015.0288
IBEX 170GS	Moil point - pyramidal	53	-	500	1015.0131
	Moil point - conical	53	-	500	1015.0128
	Chisel	53	-	500	1015.0129
	Chisel extra long	53	-	600	1015.0215
	Wide chisel	53	140	485	1015.0177
	Asphalt tool	53	140	485	1015.0183
	Blunt tool	53	-	500	1015.0130
IBEX 200GS	Moil point - pyramidal	59,5	-	560	1015.0135
	Moil point - conical	59,5	-	560	1015.0132
	Chisel	59,5	-	560	1015.0133
	Wide chisel	59,5	150	560	1015.0188
	Asphalt tool	59,5	150	560	1015.0189
	Blunt tool	59,5	-	560	1015.0134
IBEX 320GS	Moil point - pyramidal	68	-	697	1015.0139
	Moil point - conical	68	-	697	1015.0136
	Chisel	68	-	697	1015.0137
	Wide chisel	68	150	690	1015.0178
	Asphalt tool	68	150	690	1015.0184
	Blunt tool	68	-	697	1015.0138
IBEX 400GS	Moil point - pyramidal	74,5	-	742	1015.0143
	Moil point - conical	74,5	-	746	1015.0140
	Chisel	74,5	-	746	1015.0141
	Wide chisel	74,5	150	700	1015.0179
	Asphalt tool	74,5	150	700	1015.0185
	Blunt tool	74,5	-	746	1015.0142

Model	Type	Diameter	Width	Total length	Article number
IBEX 600GS	Moil point - pyramidal	85	-	895	1015.0147
	Moil point - conical	85	-	895	1015.0144
	Chisel	85	-	895	1015.0145
	Wide chisel	85	175	850	1015.0180
	Asphalt tool	85	175	850	1015.0186
	Blunt tool	85	-	850	1015.0146
	IBEX 900GS	Moil point - pyramidal	100	-	1000
Moil point - conical		100	-	1000	1015.0148
Chisel		100	-	1000	1015.0149
Wide chisel		100	200	1000	1015.0181
Asphalt tool		100	200	1000	1015.0187
Blunt tool		100	-	1000	1015.0150
IBEX 1200GS		Moil point - pyramidal	120	-	1100
	Moil point - conical	120	-	1100	1015.0152
	Chisel	120	-	1100	1015.0153
	Blunt tool	120	-	1100	1015.0154
IBEX 1800GS	Moil point - pyramidal	135	-	1200	1015.0159
	Moil point - conical	135	-	1200	1015.0156
	Chisel	135	-	1200	1015.0157
	Blunt tool	135	-	1200	1015.0158
IBEX 2202GS	Moil point - pyramidal	150	-	1300	1015.0163
	Moil point - conical	150	-	1300	1015.0160
	Chisel	150	-	1300	1015.0161
	Blunt tool	150	-	1300	1015.0162
IBEX 2800GS	Moil point - pyramidal	153	-	1400	1015.0167
	Moil point - conical	153	-	1400	1015.0164
	Chisel	153	-	1400	1015.0165
	Blunt tool	153	-	1400	1015.0166
IBEX 3200GS	Moil point - pyramidal	160	-	1400	1015.0172
	Moil point - conical	160	-	1400	1015.0169
	Chisel	160	-	1400	1015.0170
	Blunt tool	160	-	1400	1015.0171
IBEX 4000GS	Moil point - pyramidal	180	-	1500	1015.0168
	Moil point - conical	180	-	1500	1015.0173
	Chisel	180	-	1500	1015.0174
	Blunt tool	180	-	1500	1015.0175
IBEX 5700GS	Moil point - pyramidal	195	-	1650	1015.0314
	Moil point - conical	195	-	1650	1015.0318
	Chisel	195	-	1650	1015.0319
	Blunt tool	195	-	1650	1015.0316



Working tools

Model	Type	Diameter	Width	Total length	Article number
IBEX 3000HS	Moil point - pyramidal	165	-	1350	1015.0267
	Moil point - conical	165	-	1350	1015.0264
	Chisel	165	-	1350	1015.0265
	Blunt tool	165	-	1350	1015.0266
IBEX 4000HS	Moil point - pyramidal	175	-	1500	1015.0271
	Moil point - conical	175	-	1500	1015.0268
	Chisel	175	-	1500	1015.0269
	Blunt tool	175	-	1500	1015.0270
IBEX 5500HS	Moil point - pyramidal	180	-	1600	1015.0212
	Moil point - conical	180	-	1600	1015.0252
	Chisel	180	-	1600	1015.0253
	Blunt tool	180	-	1600	1015.0254
IBEX 7502HS	Moil point - pyramidal	205	-	1850	1015.0213
	Moil point - conical	205	-	1650	1015.0257
	Chisel	205	-	1650	1015.0214
	Blunt tool	205	-	1650	1015.0259

Automatic lubrication system

Article number	Type
1025.2882	Automatic lubrication system C9 IBEX 600 - 900GS-serie Hydraulic Breakers
1025.2883	Automatic lubrication system EVO2 IBEX 1200 - 4000GS-serie Hydraulic Breakers
1025.2884	Automatic lubrication system EVO2 IBEX 3000 - 7502HS-serie Hydraulic Breakers

Article number	Type
9210.0076	Chisel grease for Automatic lubrication system 500gr
9210.0075	Chisel grease for Hand lubrication 400g

IBOX-Alarmsystem

Article number	Type
1025.2820	IBOX-Alarmsystem for the breaker 12/24V

Features

C9 automatic lubrication system

Suitable for the IBEX 600GS - IBEX 900GS breakers

- Compact
- Operates using the vibrations of the breaker
- Output is adjustable

EVO2 automatic lubrication system

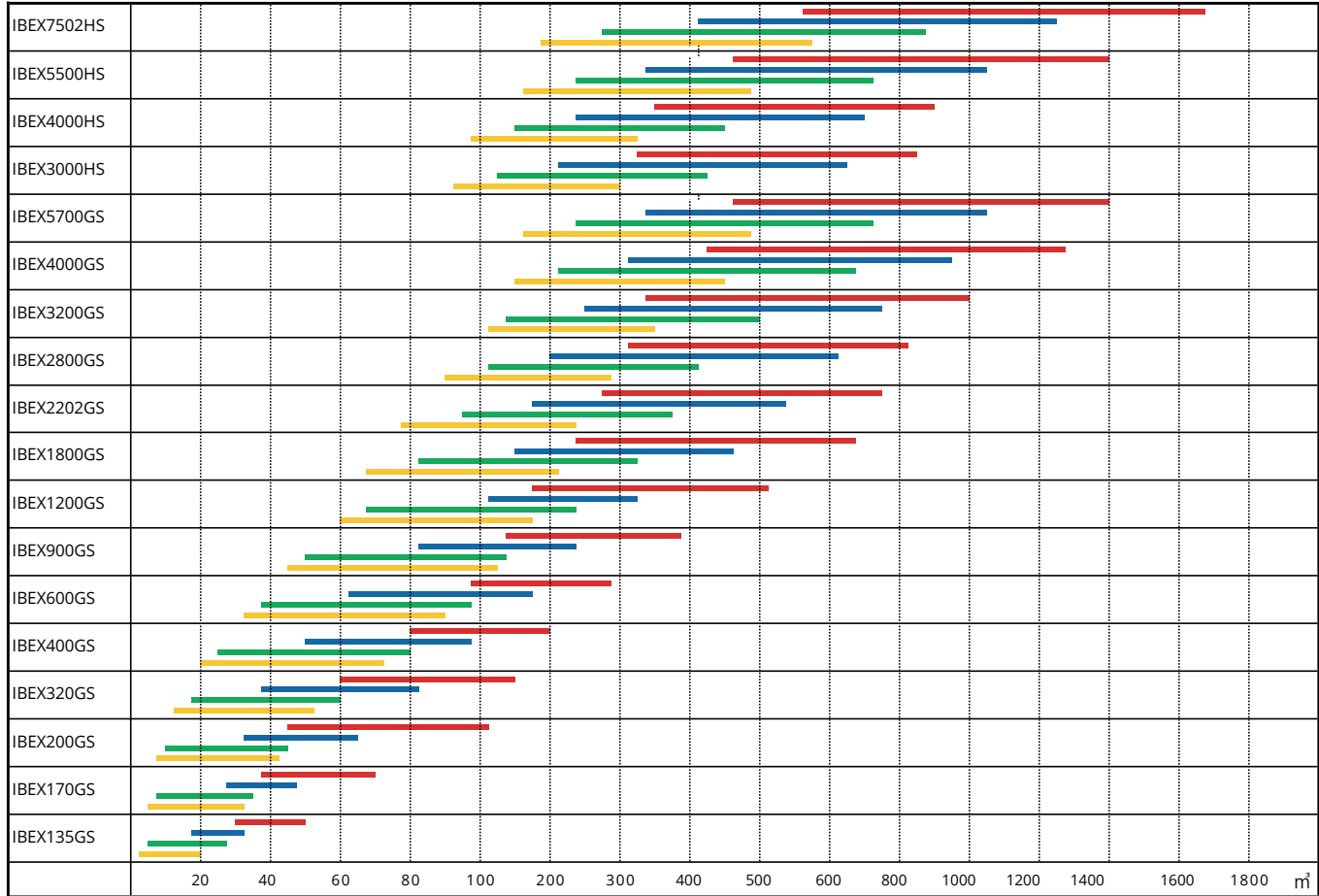
Suitable for the IBEX 1200GS - IBEX 7502HS breakers

- Constant lubrication
- Output is adjustable



Impact force

Productivity (Cubic meters per 8 hour per Day)



- Soft rocks (limestone, marble, withered sandstone)
- Non reinforced concrete
- Reinforced concrete
- Hard rocks (diabase, quartzite, solid granite, hard sandstone)

Dehaco Products



Hydraulic Attachments



Dust suppression systems



Safety Products

For more information contact your dealer:



Copyright 2023, Dehaco B.V.

Dehaco reserves the right to develop and alter products without further notice.

Misprints and printing errors reserved.

The colour of the products may vary slightly from those shown in this brochure.


DEHACO
WWW.DEHACO.NL

EN/ Hydraulicbreakers/2023-02