

DSG



**Hydraulic demolition
and sorting grabs**


DEHACO

English

Waste processing



Moving construction materials



Renovation and demolition applications



Sorting of scrap metal



Separation of various construction materials



Dehaco hydraulic demolition and sorting grabs

Once a Dehaco hydraulic grab has its claws in something, it is not very likely to drop it again. The weight of the grabs is relatively low and the volume is large, and yet they are very powerful, reliable and user friendly. They are the result of the experience that Dehaco has gained in more than 30 years.

With models for specific applications, in dozens of versions from small to large, there is always a grab that is suitable for the work that you must perform. The smallest model weighs 75 kg and has a 30 litre capacity. The largest grab is a 13,000 kg giant with a capacity of no less than 4,600 litres.

This brochure provides an overview of the different models, the possible applications and technical specifications.

Models with a slewing ring have an unprecedented manoeuvrability, due to a 360° hydraulic rotation.

The perforations in the shells provide the operator with an optimum view on his work, enabling him to work with the required precision. The dust seal of the hinges provides a lasting, trouble-free operation.

From the DSG603 up, all models are provided with two rotation motors, ensuring a much better distribution of forces on the slewing ring. The models upwards from DSG803 are made with two cylinders for an optimum power distribution, allowing the shells to close simultaneously.

Rental is a good way to discover what Dehaco's grabs are capable of.

A guide with rental equipment can be found on our website: www.dehaco.nl



Chapter	Page
Features of hydraulic demolition and sorting grabs	4-5
Demolition and sorting grabs with rotation	6-7
Demolition and sorting grabs without rotation	10-11
Adapters	12-13

Features

Hydraulic demolition and sorting grabs

360° hydraulic rotation

High manoeuvrability due to 360° hydraulic rotation - DSG-R

New compact construction improves visibility.....

Dual rotation motors

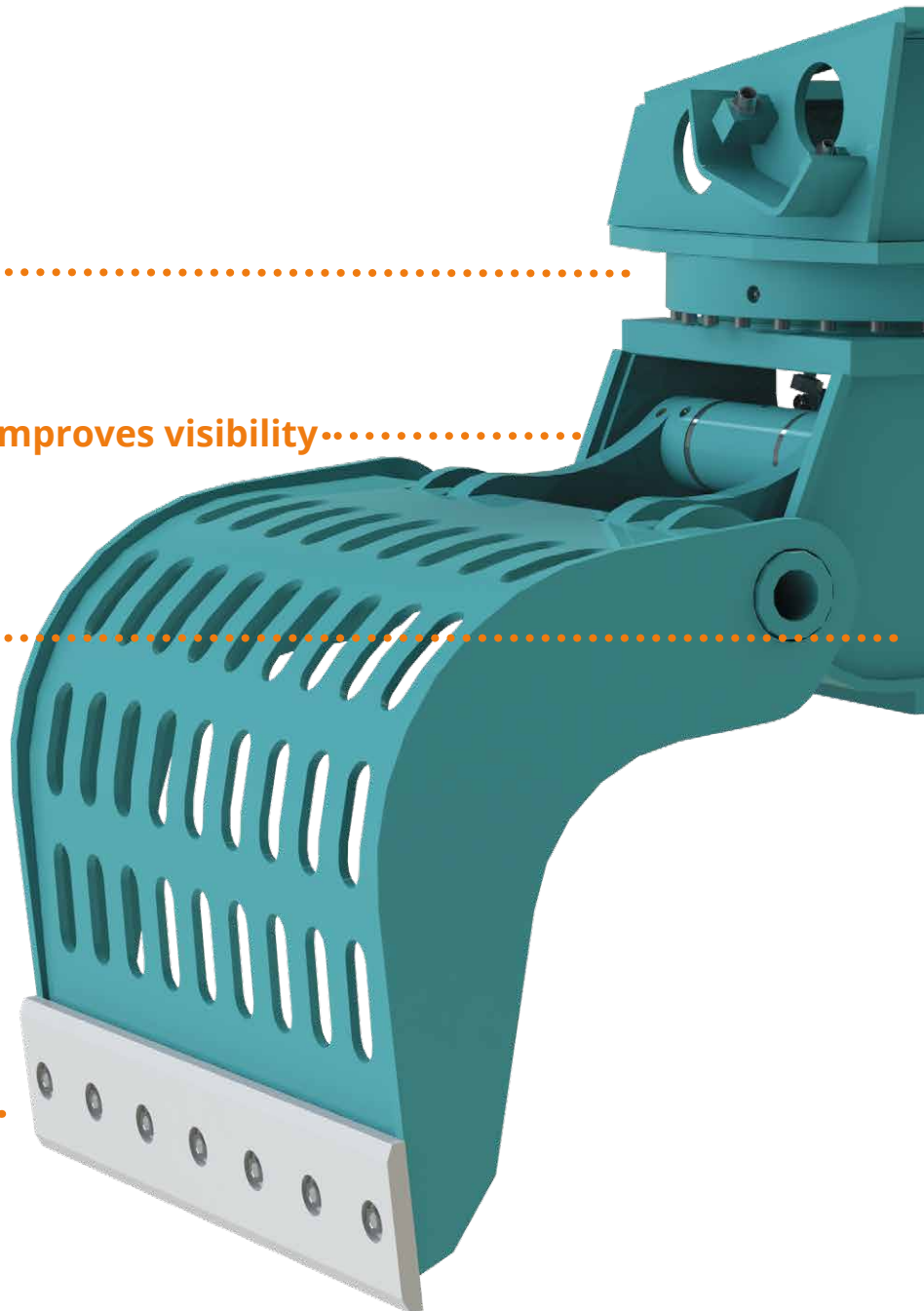
From the DSG603-R up, all models are equipped with dual rotation motors. A great benefit of this is that power distribution on the slewing ring is much better.

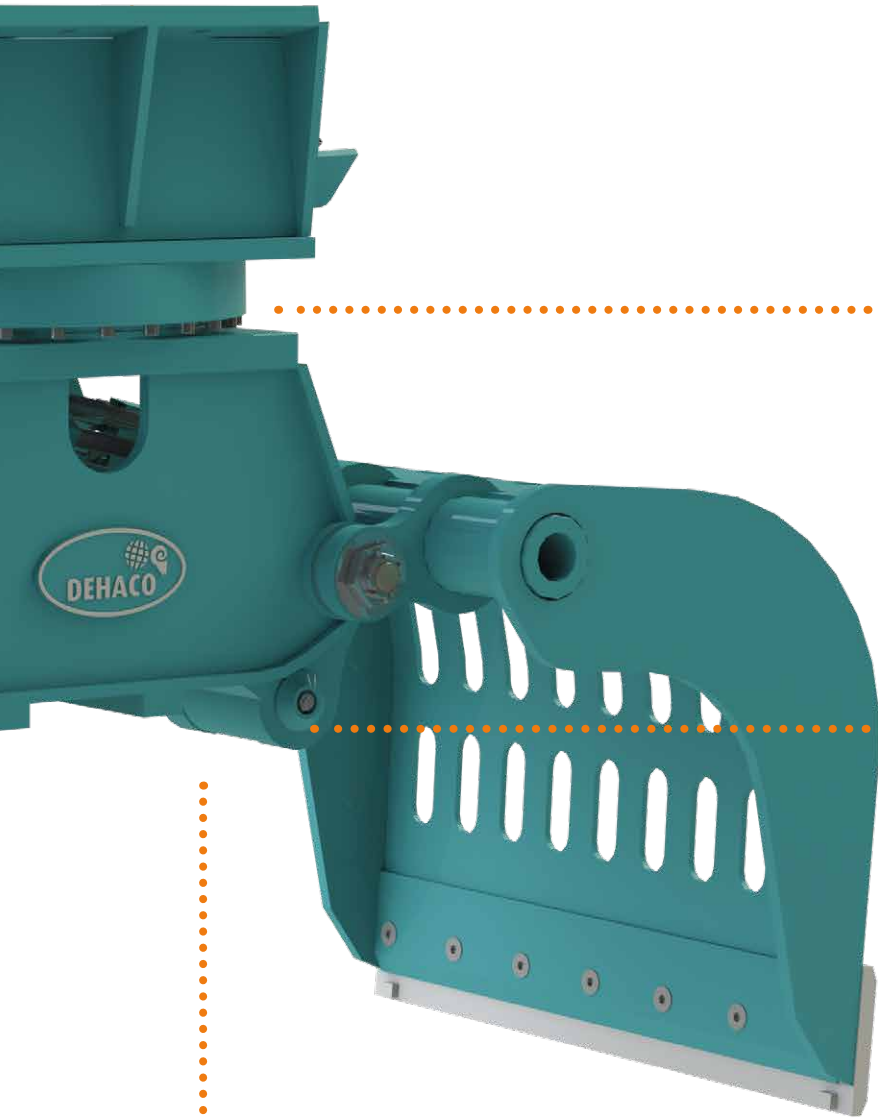
Cutting edges

From the DSG250-R and F series up, all models are equipped with interchangeable and reversible cutting edges with countersunk bolts. The blade bolts are countersunk to prevent material getting caught behind. On the 04 series, the knives have additional knife bolts. DSG 1104 to DSG1404 are also equipped with larger knife bolts.

Optional

- Available with load holding valve
- Sprayed in the required colour
- Equipped with a closed shells instead of perforated shells





Peak pressure protection

All DSG-R-04 series demolition and sorting grapples are equipped with accumulators. These protect the engines against peak pressures during operations.

Slewing ring

All DSG-R demolition and sorting grabs are equipped with a substantial slewing ring. As a result, all models are ultimately suitable for the heaviest applications, even for demolition work.

Optimum power distribution due to double cylinder

From the DSG803 up, all models are equipped with two cylinders. Consequently the power distribution is much better on the shells, as a result of which they close simultaneously.

Minimum wear and tear

Due to the special cylinder design and the equaliser, movement is kept to a minimum, resulting in almost no wear to the internal hoses.

Cylinders with cushion dampening

DSG demolition and sorting grab cylinders are equipped with cushion dampening, resulting in the shells closing without creating shocks to the excavator or damage to the main frame of the grab.

04-serie

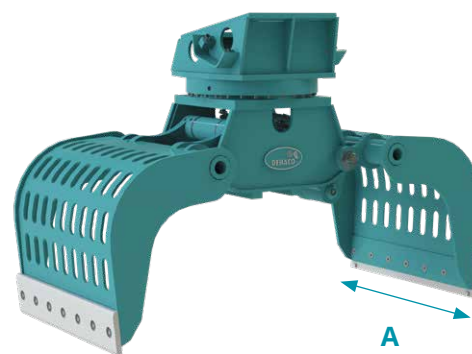
Stronger and more stable construction for the toughest conditions.

Reinforced frame bushings, shell tubes and welded joints.



Hydraulic demolition and sorting grabs

DSG70-R - DSG13000-R with rotation



Technical specifications

		DSG70-R	DSG100-R	DSG150-R	DSG250-R	DSG300-R	DSG400-R	DSG450-R
Carrier weight class ⁽¹⁾	t	0,7-1,2	1-2	1,5-2	2,5-5	2,5-5	4-6	5-8
Operational weight ⁽²⁾	kg	75	90	140	240	280	350	400
Nr. of cylinders		1	1	1	1	1	1	1
Nr. of rotation motors		1	1	1	1	1	1	1
Operating pressure	bar	300	300	300	300	300	300	300
Operating pressure rotation	bar	170-210	170-210	170-210	170-210	170-210	190-210	190-210
Oil flow	l/min	15	20	25	35	35	40	50
Oil flow rotation	l/min	5	5	10	10	10	12	12
Shell width A	mm	300	350	450	500	500	600	700
Height opened B	mm	595	610	650	710	770	880	900
Width opened C	mm	600	770	800	1.160	1.160	1.400	1.500
Height closed D	mm	600	670	670	810	850	1.010	1.055
Width closed E	mm	430	500	545	785	780	850	890
Capacity	l	30	40	70	100	100	150	200
Closing force	kN	6	7	15	20	20	23	24
Article number		1210.0018	1210.0001	1210.0006	1210.0010	1210.0088	1210.0014	1210.0016

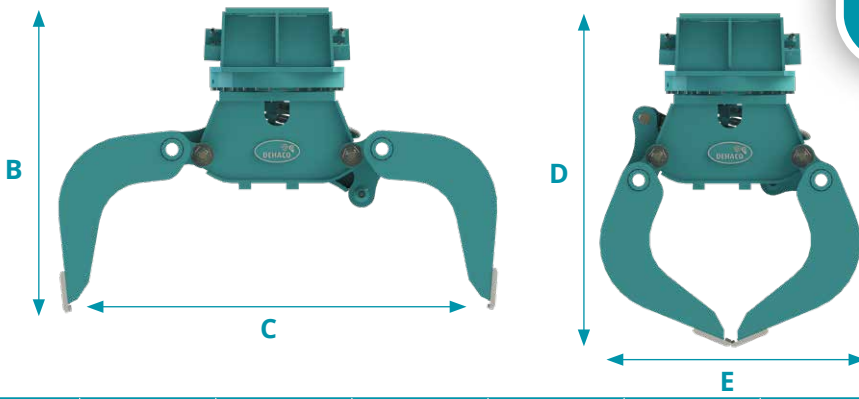
Technical specifications

		DSG1202-R	DSG1204-R	DSG1402-R	DSG1404-R	DSG1702-R	DSG1802-R	DSG1900-R
Carrier weight class ⁽¹⁾	t	17-28	17-28	20-28	20-28	23-30	24-35	25-38
Operational weight ⁽²⁾	kg	1.500	1.415	1.600	1.500	1.750	1.800	1.900
Nr. of cylinders		2	2	2	2	2	2	2
Nr. of rotation motors		2	2	2	2	2	2	2
Operating pressure	bar	350	350	350	350	350	350	350
Operating pressure rotation	bar	190-210	190-210	190-210	190-210	190-210	190-210	190-210
Oil flow	l/min	160	160	160	160	170	170	180
Oil flow rotation	l/min	35	35	35	35	35	35	35
Shell width A	mm	1.000	1.000	1.200	1.200	1.200	1.200	1.200
Height opened B	mm	1.470	1.410	1.470	1.410	1.430	1.425	1.450
Width opened C	mm	2.100	2.100	2.100	2.100	2.250	2.400	2.250
Height closed D	mm	1.660	1.600	1.660	1.600	1.695	1.690	1.700
Width closed E	mm	1.300	1.300	1.300	1.300	1.340	1.350	1.340
Capacity	l	800	800	850	850	900	950	900
Closing force	kN	68	68	68	68	80	80	80
Article number		1210.0026	1210.0084	1210.0027	1210.0085	1210.0068	1210.0067	1210.0009

(1) Weights only apply to standard carriers.

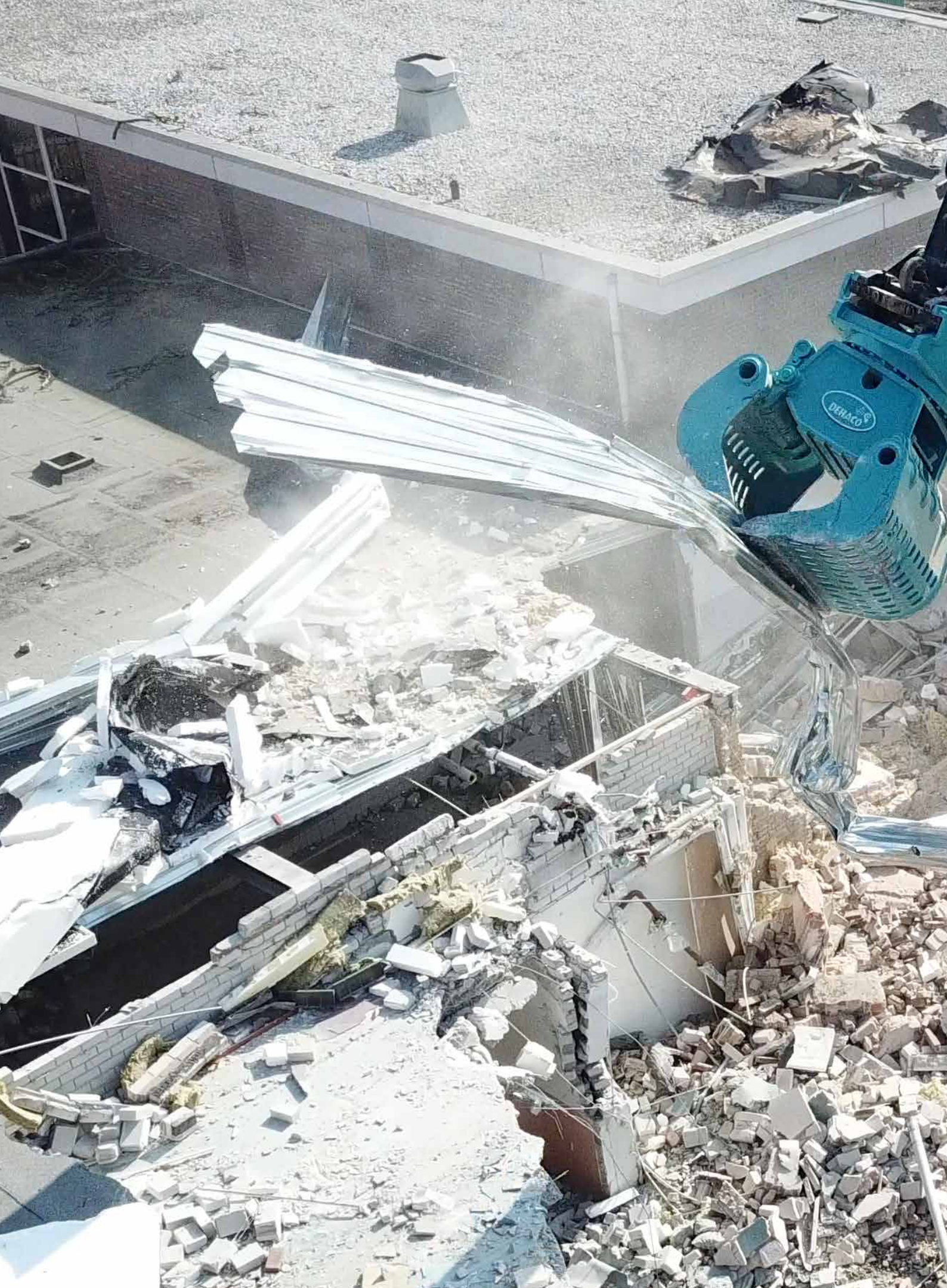
Each deviation must be agreed upon with Dehaco and/or manufacturer of the carrier prior to assembly.

(2) Net weight including top bracket and replaceable cutting edges (approximate).



DSG452-R	DSG502-R	DSG603-R	DSG803-R	DSG804-R	DSG903-R	DSG904-R	DSG1003-R	DSG1004-R	DSG1102-R	DSG1104-R
6-11	7-12	10-16	12-20	12-20	13-20	13-20	16-20	16-20	16-25	16-25
450	600	775	935	925	985	960	995	995	1.400	1.350
1	1	1	2	2	2	2	2	2	2	2
1	1	2	2	2	2	2	2	2	2	2
320	350	350	350	350	350	350	350	350	350	350
190-210	190-210	190-210	190-210	190-210	190-210	190-210	190-210	190-210	190-210	190-210
70	90	100	120	120	120	120	120	120	150	150
15	15	25	25	25	25	25	25	25	35	35
700	600	800	800	800	900	920	1.000	1.000	900	920
990	1.050	1.140	1.245	1.215	1.245	1.310	1.245	1.240	1.465	1.410
1.550	1.700	1.750	1.950	1.950	1.950	1.950	1.950	1.950	2.100	2.100
1.156	1.235	1.318	1.465	1.440	1.465	1.540	1.465	1.470	1.665	1.600
885	1.055	1.070	1.170	1.180	1.170	1.180	1.175	1.175	1.300	1.300
200	300	400	500	500	600	600	700	700	750	750
24	30	35	46	46	46	46	46	46	55	55
1210.0062	1210.0037	1210.0055	1210.0057	1210.0086	1210.0058	1210.0087	1210.0059	1210.0082	1210.0025	1210.0083

DSG2500-R	DSG2504-R	DSG2700-R	DSG2704-R	DSG3000-R	DSG3004-R	DSG4000-R	DSG4500-R	DSG5003-R	DSG8000-R	DSG13000-R
28-50	28-40	30-50	30-50	35-50	35-50	40-65	45-80	45-100	70-120	100-200
2.500	2.435	2.700	2.600	3.000	2.800	3.910	4.200	5.040	7.250	13.000
2	2	2	2	2	2	2	2	2	2	2
2	2	2	2	2	2	2	2	4	4	4
350	350	350	350	350	350	350	350	350	350	350
190-210	190-210	190-210	190-210	190-210	190-210	190-210	190-210	190-210	190-250	190-250
200	200	200	200	200	200	250	250	250	320	320
35	35	35	35	35	35	40	50	60	70	100
1.200	1.200	1.360	1.360	1.500	1.500	1.500	1.500	1.500	1.800	1.800
1.635	1.635	1.635	1.635	1.635	1.635	1.800	1.800	1.880	2.250	3.135
2.250	2.250	2.250	2.250	2.450	2.450	2.850	2.850	3.000	3.800	4.400
1.830	1.830	1.830	1.830	1.935	1.935	2.050	2.090	2.200	2.500	3.420
1.370	1.370	1.370	1.370	1.475	1.475	1.755	1.755	1.890	2.400	2.700
1.000	1.000	1.100	1.100	1.300	1.300	1.500	1.500	1.600	3.600	4.600
90	90	90	90	90	90	110	110	130	150	180
1210.0011	1210.0109	1210.0012	1210.0113	1210.0013	1210.0114	1210.0048	1210.0089	1210.0065	1210.0081	1210.0029





Hydraulic demolition and sorting grabs

DSG70-F - DSG3000-F without rotation



Technical specifications

		DSG70-F	DSG100-F	DSG150-F	DSG250-F	DSG400-F
Carrier weight class ⁽¹⁾	t	0,7-1,2	1-2	1,2-3	2,5-4	4-6
Weight (standard) ⁽²⁾	kg	50	65	100	200	280
Nr. of cylinders		1	1	1	1	1
Operating pressure	bar	300	300	300	300	300
Oil flow	l/min	15	20	25	35	40
Shell width A	mm	300	350	450	500	600
Height opened B	mm	420	450	550	650	800
Width opened C	mm	600	800	800	1.160	1.400
Height closed D	mm	600	540	540	695	840
Width closed E	mm	430	545	545	785	850
Capacity	l	30	40	70	100	150
Closing force	kN	6	7	15	20	23
Article number		1210.0038	1210.0069	1210.0063	1210.0040	1210.0015

Technical specifications

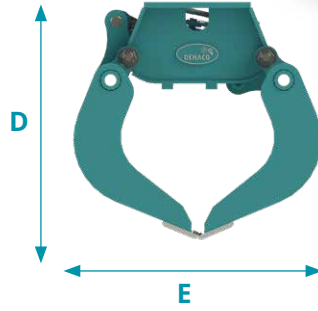
		DSG1202-F	DSG1402-F	DSG1802-F	DSG1900-F	DSG2500-F
Carrier weight class ⁽¹⁾	t	17-28	20-28	24-35	25-38	28-40
Weight (standard) ⁽²⁾	kg	1.200	1.300	1.450	1.500	1.900
Nr. of cylinders		2	2	2	2	2
Operating pressure	bar	350	350	350	350	350
Oil flow	l/min	160	170	170	180	200
Shell width A	mm	1.000	1.200	1.200	1.200	1.200
Height opened B	mm	1.200	1.200	1.250	1.020	1.270
Width opened C	mm	2.100	2.100	2.400	2.250	2.250
Height closed D	mm	1.230	1.230	1.260	1.270	1.380
Width closed E	mm	1.300	1.300	1.350	1.340	1.370
Capacity	l	800	850	950	900	1.000
Closing force	kN	68	68	80	80	90
Article number		1210.0075	1210.0076	1210.0077	1210.0078	1210.0079

(1) Weights only apply to standard carriers.

Each deviation must be agreed upon with Dehaco and/or manufacturer of the carrier prior to assembly.

(2) Weight without top bracket and hoses.

DSG



DSG450-F	DSG452-F	DSG502-F	DSG603-F	DSG803-F	DSG903-F	DSG1003-F	DSG1102-F
5-9	6-11	7-12	10-16	12-20	13-20	16-20	16-25
330	340	500	600	775	785	800	1.100
1	1	1	1	2	2	2	2
300	300	350	350	350	350	350	350
50	50	90	100	120	120	120	150
700	700	600	800	800	900	1.000	900
820	820	745	950	885	1.100	1.100	1.200
1.500	1.550	1.700	1.750	1.950	1.950	1.950	2.100
875	875	925	955	1.105	1.105	1.105	1.240
890	885	1.055	1.070	1.170	1.170	1.170	1.300
200	200	300	400	500	600	700	750
24	24	30	35	46	46	46	55
1210.0041	1210.0070	1210.0042	1210.0071	1210.0061	1210.0072	1210.0073	1210.0074

DSG2700-F	DSG3000-F
30-50	35-50
2.100	2.400
2	2
350	350
200	200
1.360	1.500
1.270	1.300
2.250	2.450
1.380	1.485
1.370	1.475
1.100	1.300
90	90
1210.0110	1210.0111



DSG400-F

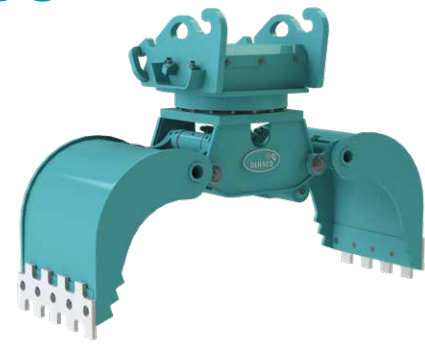
Hydraulic Demolition and sorting grabs

Adapters

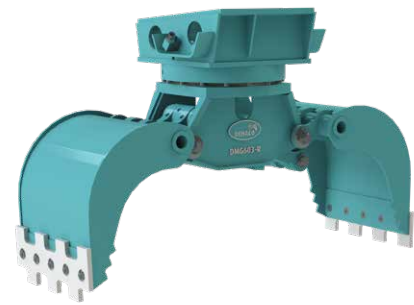
Suspension systems are available for any type of excavator and weight class. In Dehaco's range you can find the following adapters:

- CW Verachttert adapter
- OilQuick adapter
- Steelwrist adapter
- Open S adapter
- Lehnhoff MS adapter
- Engcon S adapter
- Hydrema adapter
- Terex Fuchs MHL adapter
- Hitachi ZX adapter
- Atlas TC adapter
- Liebherr LH adapter

Is your adapter not listed?
Ask us about the possibilities!



■ CW Verachttert universal suspension



■ Flat top bracket

CW Verachttert



Oilquick integrated





- Suspension with **fixed pins** for universal quick coupler.
Example: Open S, Engcon S-, Hydrema, Lehnhoff.



- Suspension with **loose pins** for suspension with direct connection.
Example: Terex Fuchs, Hitachi, Liebherr.



- Attachment brackets for hydraulic quick coupler systems



- OilQuick



- Lehnhoff



Engcon S



Lehnhoff

DHG603-R



DHG1402-7T-R



Hydraulic timber grabs

With rotation



Without rotation DHG-F



With rotation DHG-7T-R



Without rotation DHG-7T-F



Hydraulic multigrabs

With rotation DMG-R



Without rotation DMG-F



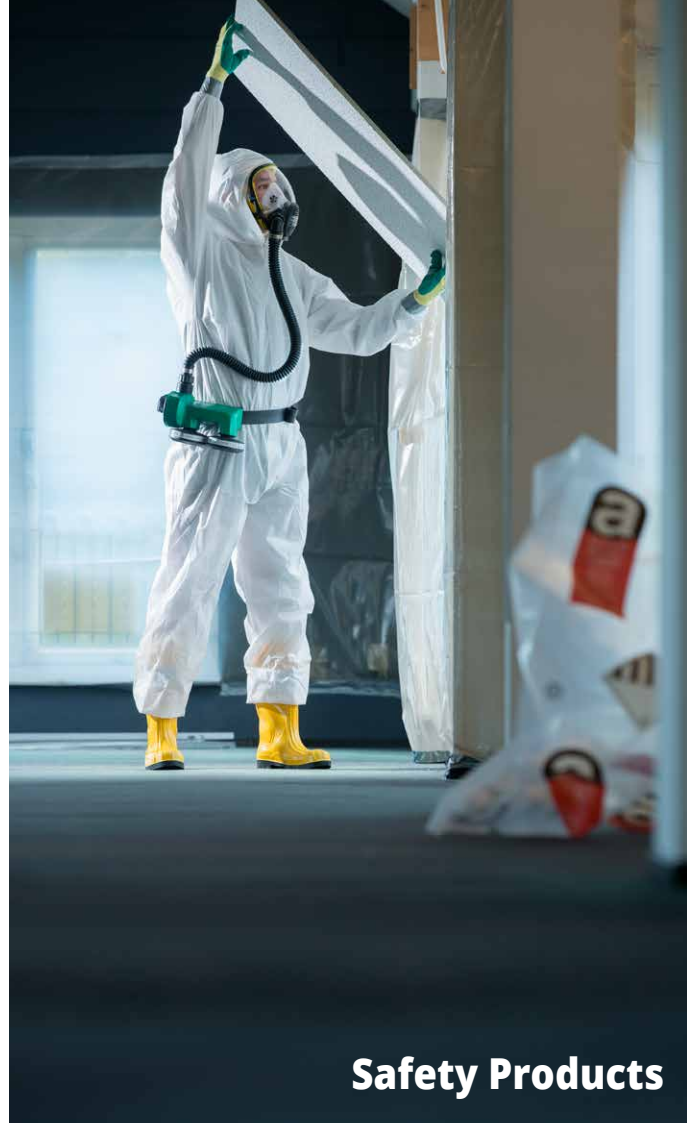
Dehaco Products



Hydraulic Attachments

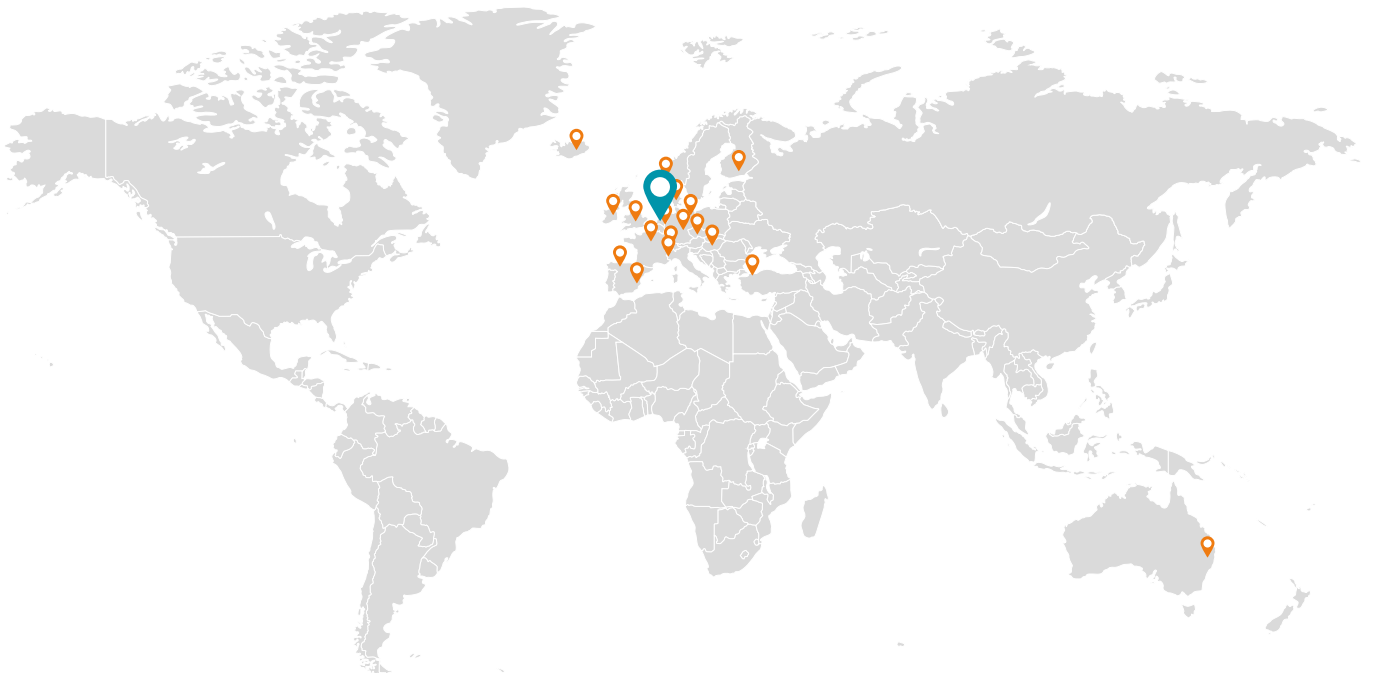


Dust suppression systems



Safety Products

For more information contact your dealer:



Copyright 2022, Dehaco B.V.

Dehaco reserves the right to develop and alter products without further notice.
Misprints and printing errors reserved.
The colour of the products may vary slightly from those shown in this brochure.



EN/DSG SortingGrabi / 202209